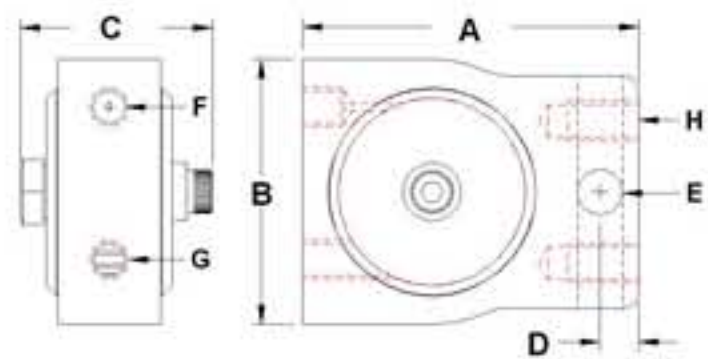


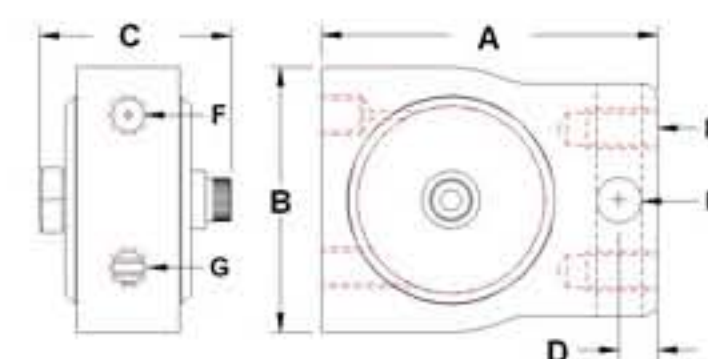
CVT-P-1



A	1-1/4" (3.2cm)	B	7/8" (2.2cm)
C	23/32" (1.8cm)	D	3/16" (.48cm)
E	5/32" (.39cm)	F	#10-32 UNF
G	#10-32 UNF	H	#6-32 UNF

Weight 0.05 lbs.	Unbalance .001 in-lbs (.0015 cm-kg)	AIR CNSMP @ 80 psi ; 5.4bar .81 cfm ; 22.8 lpm
FREQ. @ 80 psi ; 5.4bar 20,000 VPM	Force @ 80 psi ; 5.4 bar 11.4 lbf (50.4N)	

CVT-P-10



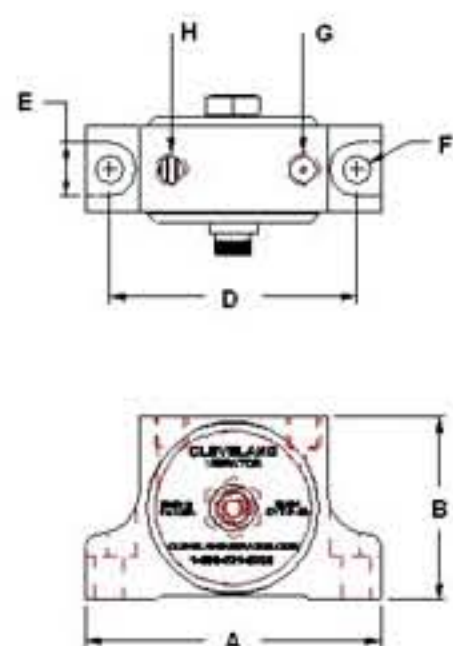
A	1-1/2" (3.8cm)	B	1-9/32" (3.3cm)
C	31/32" (2.5cm)	D	3/16" (.48cm)
E	7/32" (.56cm)	F	#10-32 UNF
G	#10-32 UNF	H	#10-32 UNF

Weight 0.10 lbs.	Unbalance .002 in-lbs (.003 cm-kg)	AIR CNSMP @ 80 psi ; 5.4bar 1.41 cfm ; 39.9 lpm
FREQ. @ 80 psi ; 5.4bar 20,900 VPM	Force @ 80 psi ; 5.4 bar 24.8 lbf (110.1N)	

上海欣帆机电科技有限公司
电话: 021-62255510
www.shinfan.com



CVT-P-12

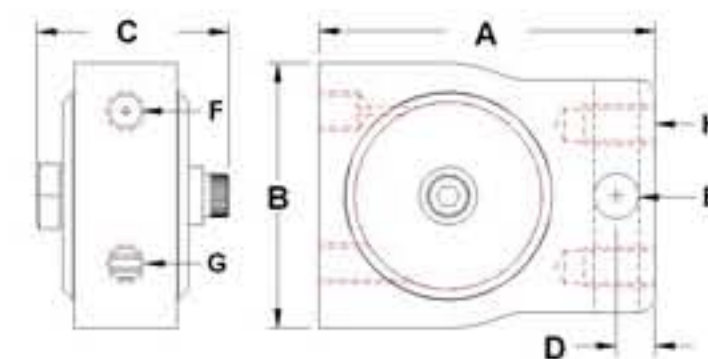


A	1-3/4" (4.4cm)	B	1-1/16" (2.7cm)
C	15/16" (2.3cm)	D	1-7/16" (3.7cm)
E	5/16" (0.8cm)	F	3/16" (0.4cm)
G	#10-32 UNF	H	#10-32 UNF

Weight 0.10 lbs.	Unbalance .002 in-lbs (.003 cm-kg)	AIR CNSMP @ 80 psi ; 5.4bar 1.41 cfm ; 39.9 lpm
FREQ. @ 80 psi ; 5.4bar 20,900 VPM	Force @ 80 psi ; 5.4 bar 24.8 lbf (110.1N)	



CVT-P-20



A	1-5/8" (4.1cm)	B	1-1/4" (3.3cm)
C	1-1/8" (2.8cm)	D	3/16" (.48cm)
E	1/4" (.56cm)	F	#10-32 UNF
G	#10-32 UNF	H	#10-32 UNF

Weight 0.10 lbs.	Unbalance .006 in-lbs (.007 cm-kg)	AIR CNSMP @ 80 psi ; 5.4bar 2.0 cfm ; 55.4 lpm
FREQ. @ 80 psi ; 5.4bar 18,000 VPM	Force @ 80 psi ; 5.4 bar 55.2 lbf (245.1N)	